



VICTORIA FALLS | LIVINGSTONE | ZAMBIA

Maramba River Lodge

Newsletter 7

April 2010

Have you clients coming to the World Cup?

Staff News



Russell Young has been Managing Director of The Lodge since 1999, though he has been in Zambia for 15 years. Born on a farm in Victoria, Australia, he has travelled widely in Africa being a Tour Leader for an Overlanding company. Prior to Maramba he was working on the Lower Zambezi and before that on the shores of Lake Tanganyika. Married to Pippa, born in Tanzania and trained as a nurse in London, they have two girls Kira and Nikita.



The family pictured in Namibia.
Russell will be at the Indaba Expo in Durban from 8th - 11th May

The excitement grows as the Soccer World Cup approaches. Many people are unaware that they could easily extend their journey and see one of the Wonders of the World. Yes, the Victoria Falls are only a short flight from South Africa. Livingstone airport is reachable from all the major cities in RSA. Maramba River Lodge is the perfect place to stay as it is the nearest Lodge to the Falls and a car will meet clients at the airport. Contact the Lodge for **SPECIAL OFFERS over the World Cup period.**



A recent picture of the Falls in full spate after torrential rain. Quite an awesome sight. The Falls are always impressive during these months –Visitors may need a raincoat and perhaps an umbrella when walking along Knife's Edge Bridge. It is certainly something they will never forget.

Photo by Gill Staden

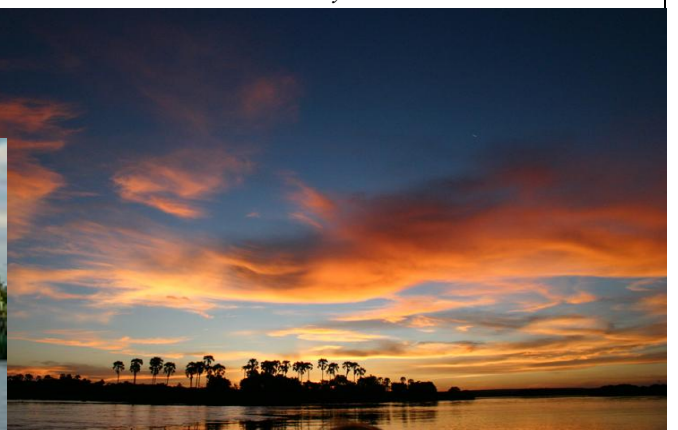
And that's not all....

When visitors have had their fill of the Falls, they can take a **Sundowner Cruise** on the Zambezi aboard the **Zamcruiser**, a 40 seater pontoon boat fully carpeted, furnished in teak and powered by two outboard motors. Clients may see a variety of game including hippo, crocodile, elephant and occasionally rhinos as well as many different bird species.

Comment from a passenger:- *'A popular cruise including finger snacks, beer, wine champagne and soft drinks. Great photo opportunities against spectacular Zambian sunsets.'*

Photo by Ulrich Mattheus

Book at the Lodge
reception for this daily cruise



A review of the Lodge posted on *Trip Advisor* on March 16th 2010

'It's the closest lodge to the Zambian Victoria Falls, set in spacious grounds under a forest canopy right alongside the Maramba River. There is a wealth of accommodation choice, from camping to luxury tents and chalets. Everything is laid out at Maramba with peace and relaxation in mind - delicate layout means you are never on top of each other. The restaurant & lounge/pool areas are on the banks of the Maramba River, with the result being great birding and wildlife right on your doorstep. The Maramba River Lodge is inside the Mosi-oa-Tunya National Park, and so there is always something to see. We stayed in one of their regular safari tents, which are simple but comfortable. Most important is a complete defence from mosquitoes - including a mosquito net, ceiling fan and coils. It's well situated close to the Falls, and to most of the activities like the African Queen, micro-lights etc. Great place.'

WEATHER FOR THIS PERIOD

	April	May	June
Max Temperature	30C(85F)	28C(82F)	25C(78F)
Min Temperature	15C(59F)	11C(50F)	7C(42F)
Rainfall	2.4cm	0.6cm	0cm
Humidity	63%	58%	55%

Where is Maramba River Lodge?

4K from the Victoria Falls in the Mosi-oa-Tunya National Park

Contact Details?

email: maramba@zamnet.zm

Tel. : (+260)213 324 189

Fax :(+260)213 323 130

www.maramba-zambia.com

P.O.Box 60975, Livingstone, Zambia

Skype: marambariverlodge

Events in and around Livingstone

Lunar rainbow--Victoria Falls

Also known as a **moonbow** or **white rainbow**, this is a rainbow produced by the moon rather than the sun. The lunar rainbow is relatively faint, due to the smaller amount of light from the moon. The colours in the lunar rainbow do appear in long exposure photographs. It is a spectacular sight and very romantic. The lunar rainbow can be viewed from a day before to two days after full moon from approx 07.00 pm. The entrance fee to The Victoria Falls on these evenings is \$30-00 and it is well worth it. Take a bottle of wine and some snacks with you and you have a couple of hours at The Victoria Falls you will not easily forget. There are only a handful of places in this world where this phenomenon can be viewed and The Victoria Falls is without doubt the most impressive.

International Museum Day -18th May-- Livingstone Museum

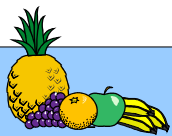
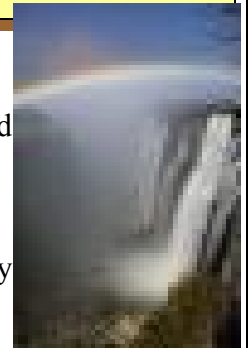
Every year on International Museum Day there is no entrance fee to visit the museum. Usually special exhibitions will be held on particular themes and there are cultural performances in front of the museum.

***Tree Course at the Lodge by Meg Palgrave - 19th May**

See information in January Newsletter or contact the Lodge

GOOD NEWS !

The road from Lusaka to Livingstone should be finished by the end of April!



Sample Menu for Dinner

Mushroom croustini

Fish Romana

Special Dessert of the day

Zambian dishes available
Further menus each Newsletter

View 360 degree interactive photograph of the Maramba Riverside Restaurant on the web site. It is situated in a stunning spot right on the river. The Dinner menus has been upgraded and a sample is included here. Please be sure to inform the Lodge of any special dietary needs.



Exchange Rates:-

1\$ =K4,500

1£ =K6,500

1Euro=K5,500

1ZAR = K550